



Foton T5 Quick Start Guide

Version 4



Contents

1 Charging EV	3
1.1 Before Charging	3
1.2 Charger Check	3
1.3 Charging: Plug-In	4
1.4 Charging: Unplugging the Charger	4
2 Start and Driving EV	5
2.1 Starting the Vehicle	5
2.2 Driving the Vehicle	5
2.3 Shutting Down the Vehicle	6
3 FAQ	7

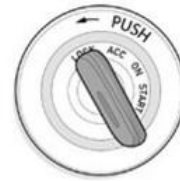
1 EV Charging

1.1 Before Charging

Step 1

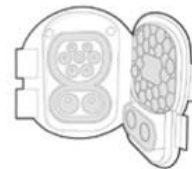
You can select “ACC” position to monitor the progress of charging process as well.

Turn the vehicle ignition key to “OFF” or “LOCK”.



Step 2

The fast charger is used for either normal or fast charging process, based on the charging cable as well as charging station.

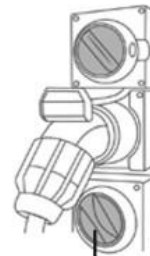


1.2 Charger Check

Step 3

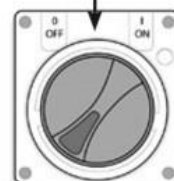
Plug orange plug into wall with switch in the off position. Screw in orange disk so the cable cannot be pulled out. Do not plug the charger into the truck at this point.

Ensure there is no physical damage to the cable or exposed wires. Make sure that the cable has not been exposed to water.



Step 4

Turn the switch ON at the wall. This is safe to do as the charge cable will not apply power UNTIL plugged into the vehicle.



Step 5

Check charger display:

AC Charger:

- If the unit is ready to charge, display will show “ready”.
- The AC charger will charge at a maximum of 11A, based on the type of charger used

DC Charger:

- Use the charger device screen to start.
- Ensure the charger connector plugged to the vehicle properly (next steps).



1 EV Charging

1.3 Charging: Plug-in



Step 6

Plug the charge cable into the vehicle.



Step 7

Follow the specific charger instructions pertaining to the type of DC charger being used.



Step 8

For monitoring state of charge (SOC) during the charging process, turn the ignition key to “ACC” and turn the dash on. Charging details such as battery charge percentage, time to fully charge will be shown on the screen.

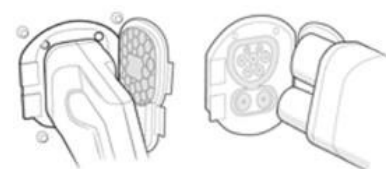
1.4 Charging: Unplugging the Charger

Step 9

To unplug the charger before fully charged -
FIRST STOP THE CHARGING SESSION BY TURNING
THE CHARGER OFF

Step 10

Once the vehicle is fully charged the charger lights or display will change to indicate that charging is complete.



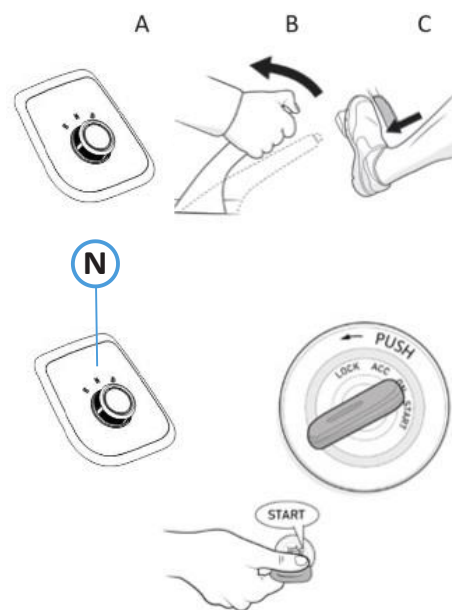
2 Start and Driving EV

2.1 Starting the Vehicle

Step 1

For preparation to start the vehicle, make sure that the drive selector is in "N" position, the hand brake and foot brakes are engaged.

A: Drive Selector
B: Hand Brake
C: Foot Brake



Step 2

Keep drive selector in "N" position, and then turn the ignition key to ON.

Step 3

Turn the key to the "START" position and hold for 1 second to power up the Foton Mobility Electric Drive System.

2.2 Driving the Vehicle

Step 4

Knob to select drive mode:

N - NEUTRAL:

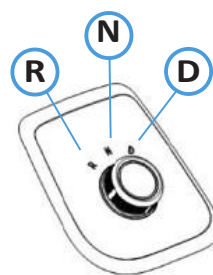
- Select when parking/stopping
- Vehicle can only be started from this position

D – (DRIVE):

- Foot on the brake, turn knob to D to select DRIVE
- Select for forward operating motion

R – REVERSE:

- Foot on the brake, turn knob to R to select REVERSE
- Select for reverse operating motion



You can only choose D (Drive) or R (Reverse) from the NEUTRAL POSITION.

2 Start and Driving EV

2.3 Shutting down the Vehicle

Step 6

Put your foot on the brake and come to a complete stop. Keep your foot on the brake..



Step 7

Put the gear selector in the N position.



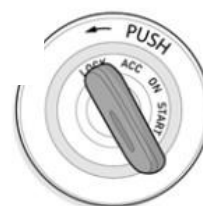
Step 8

Engage the park brake.



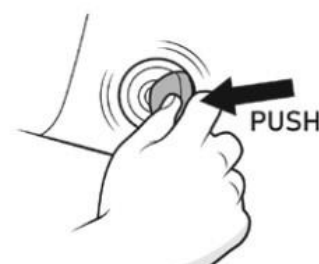
Step 9

Turn the key into the OFF or LOCK position.



Step 10

To remove the key, push the key while turning it to the "LOCK" position.



3 FAQ

3 Frequently Asked Questions

1 I don't see any lights when plugging in the charger or turning on the ignition.

Confirm that the 2x 12V batteries are not flat, if they are, then a jump start will be required. The truck will start recharging the batteries once the truck is started.

2 I turn the charger ON at the wall, but I am not seeing ANY lights on the display.

It is likely that there is a problem at your facility with the wall socket, check to see if the RCD (Residual Current Device) has tripped and reset if safe to do so.

Make sure that this is done by an authorised person.

3 I have finished the charge cycle but by turning ON the key, the truck doesn't start.

Turn the ignition key OFF and wait for 5-10 second, then start it again. You will know the truck has started when the speedo goes from zero to max and back.

4 I cannot remove the plug by switching the key to ON, it seems stuck?

- Please refer to the Owner's Manual, releasing the connector when a charging fault happens, in charging procedure.
- Please contact your manager or a Foton Mobility Distribution representative on 24/7 Helpline 1800 FOTONEV or 1800 368 663..

Do not touch anything inside of the component box unless directly supervised by authorised FOTON Mobility Distribution technician 1800 FOTONEV or 1800 368 663.

5 If I lose power during drive, will I lose control of the truck?

- If you ever experience loss of power during drive, safely make your way to the side of the road with your hazards applied and return the truck to the standby position.
- Your brakes will still remain functional however the brake pedal will be hard due to no booster assistance and steering will remain functional also (although it will be quite stiff as you will not have the assistance of power steering).
- When a loss of power event occurs, move the vehicle to a safe position, and please contact the FOTON Mobility Distribution technician 1800 FOTONEV or 1800 368 663 to investigate further.

6 I have a white WAIT symbol on the dash, and it won't let the truck start. What do I do?

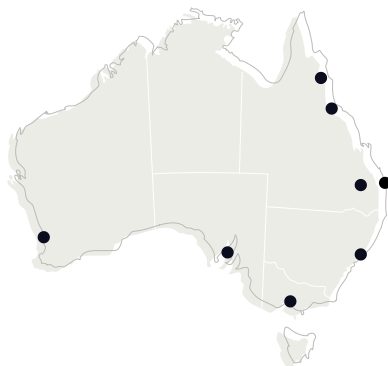
The wait symbol appears while the truck is discharging start-up power as the truck can only be started once every 30 seconds, turn the key OFF and wait a few seconds then turn the key and start as normal.

7 Why can't I feel the effects of regenerative braking on some occasions?

- The vehicle will only allow regenerative braking at its full capability if all external factors allow it to:
 - Pack voltage, motor temperature, MCU temperature, deratings, error codes, etc.
- Generally, you will not feel the effects of regenerative braking if the battery is above 90% and at speeds below 20km/h.

For further information, please refer to the Owner's Manual.

Change your Fuel. Change the World.



Authorised Dealerships/ Service Centres

Cairns

ABC Sales & Maintenance

278 Hartley Street, Cairns QLD 4870
www.abccoachsales.com.au
(07) 4041 9456

Townsville

RGM Maintenance

24 Curley Circuit Roseneath QLD
4811 (Service & Parts only)
www.rgmmaintenance.com.au
(07) 4421 9100

Ipswich

Llewellyn Motors

246 Brisbane Road, Booval QLD
4304
www.llewellynmotors.com.au
(07) 3432 4380

Brisbane

Foton EV Brisbane

5 Viola Place, Brisbane Airport, QLD
4008
www.fotonevbrisbane.com.au
1300 584 897

Sydney

Foton EV Sydney

402 Hoxton Park Rd, Prestons NSW
2170
www.fotonevsydney.com.au
(02) 4648 8822

Melbourne

Sustainable Vehicle Solutions Pty Ltd

(a CMV Group Company)
21 Technology Circuit, Hallam, VIC
3803
www.sustainablevehicles.com.au
(03) 8789 8600

Adelaide

Sustainable Vehicle Solutions Pty Ltd

(a CMV Group Company)
5 Indama Street, Regency Park SA 5010
www.sustainablevehicles.com.au
(03) 8789 8600

Perth

Foton EV Perth

5 Walpole St, St James WA 6102
www.fotonevperth.com.au
(08) 9351 3888



fotonmobility.com.au